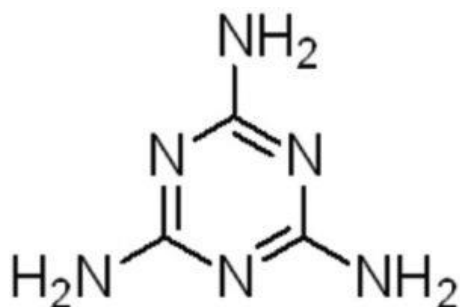
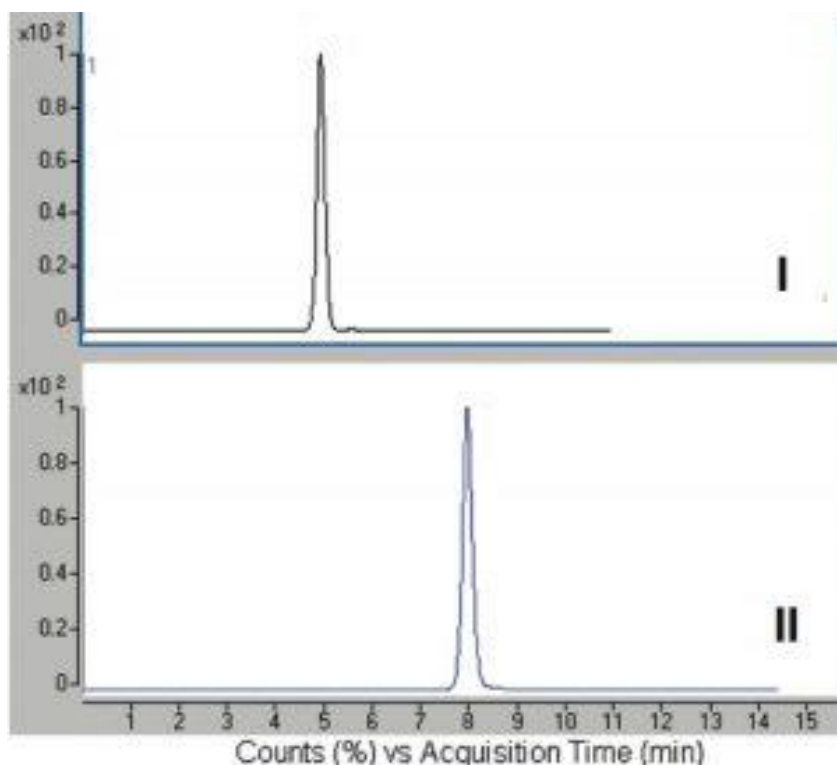


## Melamine Analyzed with LCMS - AppNote

### Detect Trace Levels of Melamine

The unique chemical properties of Melamine (base functionalities) present challenges in obtaining Retention and adequate Sensitivity, when using standard HPLC Columns. In this Method, Melamine is Analyzed under Aqueous Normal Phase (ANP) conditions with an increased Sensitivity making it possible for detection at Trace Levels.



### Peak:

Melamine  $m/z$  127 (M+H)<sup>+</sup>

### Method Conditions

**Column:** Cogent Diamond Hydride™, 4 $\mu$ m, 100Å

**Catalog No.:** [70000-15P-2](#)

**Dimensions:** 2.1 x 150mm

**Mobile Phase:**

I: 60% acetonitrile / 40% DI water / 0.1% formic acid

II: 70% acetonitrile / 30% DI water / 0.1% formic acid

**Flow rate:** 0.4mL / minute

**Detection:** ESI – pos – Agilent 6210 MSD TOF Mass Spectrometer

**Sample Preparation:** 166.7µg / mL of compound in 50% Acetonitrile / DI Water / 0.1% Acetic Acid.

Run 1:1000 dilution in 80% Acetonitrile / DI Water / 0.1% Acetic Acid

**t<sub>0</sub>:** 1.44 minute

**Notes:** Several dogs and cats died or were seriously ill after consumption of pet foods which had been manufactured with adulterated wheat glutens. After testing of the wheat glutens it was determined that they contained significant levels of Melamine and / or several related compounds.



**Attachment**

**No 50 Melamine Analyzed with LCMS pdf** 0.2 Mb [Download File](#)

Printed from the Chrom Resource Center

Copyright 2025, All Rights Apply

**MicroSolv Technology Corporation**

9158 Industrial Blvd. NE, Leland, NC 28451

Tel: (732) 380-8900

Fax: (910) 769-9435

Email: [customers@mtc-usa.com](mailto:customers@mtc-usa.com)

Website: [www.mtc-usa.com](http://www.mtc-usa.com)